

BCCF E-MAIL BULLETIN #236

Your editor welcomes any and all submissions - news of upcoming events, tournament reports, and anything else that might be of interest to B.C. players. Thanks to all who contributed to this issue. To subscribe, send me an e-mail (swright2@telus.net) or sign up via the BCCF webpage (www.chess.bc.ca); if you no longer wish to receive this Bulletin, just let me know.

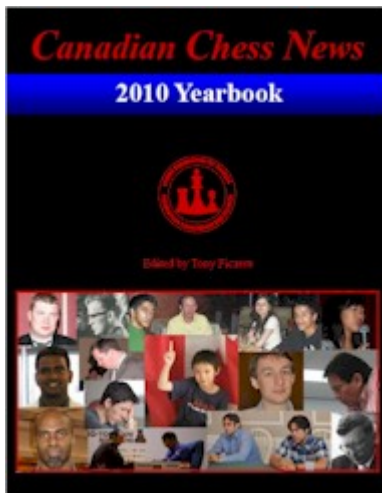
Stephen Wright

HERE AND THERE

April Active (April 1)

Thirty-eight players were not fooled by the date and showed up for the April active event at the Vancouver Bridge Centre; since the numbers were so large the tournament was split into two sections, Open and U1700. In the former Butch Villavieja returned to the winner's circle with a perfect 4.0/4, a half point ahead of another returning player, Janak Awatramani. Janak hasn't been active in these parts for a number of years because of spending time in Switzerland and other destinations, but is taking up where he left off. Wayne Kort and Jeremy Hui split the U2000 prize. In the U1700 Section four players tied for first, John Wong, Andrew Lee, Lionel Han, and Jeffery Dawson with 3.0/4. Well, actually five: Janak's father Gyan also scored 3.0 points, but was playing as a "guest." Luc Poitras was the organizer and TD. [Crosstable](#) [Photos](#) by Sophia Hague

2010 Canadian Chess News Yearbook



Features all articles from Canadian Chess News in 2010! Includes Chess Globe, Across Canada and top rating lists for each month. Dozens of photos and articles highlighting the year in Canadian chess. Contributors include: IM Lawrence Day, IM Deen Hergott, NM Kevin Pacey, IM Edward Porper, IM Eric Hansen, GM Victor Mikhalevski ... and many more! Annotated games by IMs and GMs from across Canada and around the world: GM Eugenio Torre, GM Victor Mikhalevski, GM Josh Friedel, GM Jesse Kraai, GM Pascal Charbonneau, IM Lawrence Day, IM Edward Porper, IM Raja Panjwani ... just to name a few! 287 games (275 annotated!) with 807 diagrams! The most comprehensive source of Canadian chess news anywhere! Electronic version also available in PDF format on CDROM at the CFC! Shop at the Chess Federation of Canada for all of your chess needs. Price: \$50, CFC Member: \$45 (add GST & shipping). Visit us online to order at www.chess.ca.

SFU OPEN (March 23-25) by Joe Roback (SFU Chess Club president)



Round 3: TD Ben Daswani vs. Tanraj Sohal, Omar Jessa plays Jofrel Landingin



Organizer Joe Roback and winner Tanraj Sohal

Last weekend was host to SFU's first rated tournament since its present reformation in 2008. A surprising seventeen players participated, including some new-comers to the BC tournament cycle: Darrell Collins who commuted from Kamloops, Darko Dimitrijevic who emerged back to tournament chess from the 1980's, and a number of up-and-coming juniors. The results largely attested to the predictive clairvoyance of CFC ratings. Former BC Junior Champion and veteran tournament competitor, Tanraj Sohal, place clear first with 4.5/5 over some local SFU talent: Kevin Goodman, and tournament director Ben Daswani, who split second place (4.0/5). Other prize-winners include Joe Roback and Mavaddat Javid who split the U1900 prize. Omar Jessa won the U1600 prize and Constantin Rotariu won the biggest-upset prize.



In the Junior Active a few doors down, Jingzhi (Edwin) Xu took top honors with an undefeated 4.0/4 closely followed by Matthew Katz. Ambitious highschooler, Alice Xiao, collaborated by helping direct, supervise and coordinate email. Thanks Alice!

Due to the resources of the SFU Chess club, room bookings were completely free and thus entry fees were able to remain reasonable. Ben and I plan to host more rated SFU Opens in the near future. Also, the SFU Chess Club is and are open to collaborate our venues with other organizers who need a site. For example, last year's BC Closed Championship and Max Doroshenko events. (However, there will not likely to host more Junior Actives.) Special thanks to Lara and Michael Lo who were pivotal in helping direct, administrate, and account the two tournaments despite Ryan's abrupt withdrawal due to illness in the first round. [Crosstables](#)

JOSEF VAROSI OPEN (March 15-18) by Michael Yip

Seventy players registered including fourteen unrated players getting their first taste of FIDE chess. >2000 players entry fee is a modest 3000 HUF/13.40 CAN. Another Hungarian bargain! Well done to Szepes, Tamas and Mezei, Csaba came in equal first scoring 6.0/7 with Szepes taking first on tie-breaks. Nogrady, Vilmos and Gal, Janos were in 3-4= at 5.5/7. I did not play round 7 as there was a team championship game scheduled at the same time and my team was short of players. Overall my 4.5/6 was an OK result but the quality of my games was not so impressive. I did well against the two high rated players I faced but against lower rated players my play was less than stellar.

Other big performances were

21	Gal, Janos	5.5	27.0	19.00	21.5	1857	2076	+1.64
15	Markos, Adam	5.0	32.5	21.25	24.0	1926	2096	+1.67
30	Orosz, Andras	5.0	32.5	21.25	22.0	1732	2039	+2.32
42	Bege, Levente	4.0	32.0	17.75	20.5	1576	1974	+3.21
33	Polyik, Peter	4.5	29.0	16.75	20.0	1685	1937	+1.93

Varga, Richard - Yip, Michael [B07] Josef Varosi Open (2), 15.03.2012

1.e4 d6 2.d4 Nf6 3.Nc3 Nbd7 4.Be3 e5 5.Nf3 c6 6.Qd2 Be7 7.0-0-0 A rare plan. 7.h3 Preventing ...Ng4 is more normal. 7...0-0 (7...b5 8.Bd3 Bb7 9.d5 b4 10.dxc6 Bxc6 11.Ne2 Nxe4 12.Bxe4 Bxe4 13.Ng3 Bg6 14.h4 h6 15.Rc1 Nf6 16.h5 Bh7 17.Qxb4 0-0 18.Qd2 Ng4 19.c4 e4 20.Nd4 Nxe3 21.fxe3 Bh4 22.Qf2 Qg5 23.Rh3 Qa5+ 24.Kf1 Bxg3 25.Rxg3 Qxh5 26.Kg1 Qe5 27.Nc6 Qe6 28.Nd4 Qd7 29.Qf6 Bg6 30.Qf4 Kh7 31.Rf1 f5 32.Rh3 0-1 Skok,B-Biti,O/Portoroz 2005) 8.Bd3 (8.g3 b5 9.a3 Bb7 10.Bg2 a5 11.Nh4 exd4 12.Bxd4 b4 13.Nd1 c5 14.Bxf6 Nxf6 15.e5 Ne4 16.Qe2 Bxh4 17.Bxe4 Bxe4 18.Qxe4 Bf6 19.0-0 Bxe5 20.a4 Qd7 21.Kg2 Rae8 22.Qd5 Re6 23.c4 Bd4 24.Rc1 Qxa4 25.Qf3 Rf6 26.Qd3 Qc6+ 27.f3 Re8 28.Rc2 a4 29.Re2 Rxe2+ 30.Qxe2 Re6 31.Qd3 Qe8 32.h4 Re2+ 33.Kh3 Qe6+ 34.g4 h5 0-1 Kosintseva,T-Ovod,E/Kolontaevo 1998) 8...b5 9.0-0 a6 10.dxe5 dxe5 11.Ne2 Re8 12.Ng3 Bf8 13.a4 Rb8 14.axb5 cxb5 15.Rfd1 Bb7 16.c4 b4 17.Qe2 Nc5 18.Bg5 Qb6 19.Nh2 Nb3 20.Rab1 Nd4 21.Qe1 Bc5 22.b3 a5 23.Nhf1 h6 24.Bc1 a4 25.bxa4 Bc6 26.a5 Qxa5 27.Bb2 Qa8 28.Ne3 Nxe4 29.Nxe4 Bxe4 30.Bxe4 Qxe4 31.Nd5 Qc2 32.Nc7 Re7 33.Na6 Qg6 34.Bxd4 exd4 35.Nxb8 Rxe1+ 36.Rxe1 Qd6 37.Re8+ Kh7 38.Rc8 d3 39.Nd7 Bxf2+ 40.Kxf2 Qxd7 41.Ra8 Qd4+ 42.Kf1 b3 43.Ra5 Qf4+ 44.Kg1 b2 0-1 Gomez Jurado,L-Janev,E/Marcy L'Etoile 2007 **7...0-0=** 7...Ng4 8.Bd3 Nxe3 9.fxe3 Qa5 10.Kb1 b5 11.h4 a6 12.Qf2 b4 13.Ne2 Nf6 14.Nc1 Qc7 15.Nd2 Be6 16.Rdf1 h5 17.Qe2 Ng4 18.Bc4 d5 19.Bd3 a5 20.exd5 cxd5 21.e4 0-0 22.dxe5 a4 23.Nf3 a3 24.Qe1 axb2 25.Kxb2 Nxe5 26.Kb1 Nxd3 27.cxd3 dxe4 28.Qxe4 Bxa2+ 29.Nxa2 Rxa2 0-1 Saccona,S-Okhotnik,V/Lodi 2007 **8.Kb1 b5** Black has to try for counterplay given the opposite-side castling situation. 8...Re8 9.h3+/- (9.dxe5 dxe5 10.Bd3 Qc7) **9.dxe5 dxe5**



10.Bd3 Bb7?! Not understanding the position at all. The bishop must remain on c8 to cover f5. 10...Qc7 is a better way to maintain the balance. 11.Ne2 Re8 This extra prophylactic move is Black's simplest way to equality. (11...b4 is more ambitious and risky as Black needs to be ready to sacrifice a pawn. 12.Ng3 Nc5 Black is at least equal. 13.Bxc5 (13.Nf5? Bxf5 14.exf5 e4+) 13...Bxc5 14.Qg5 h6!? is a dynamic pawn sacrifice for the initiative. (14...Re8 Now this rook move is not so clear. 15.Nf5 Bxf5 16.Qxf5 Bxf2 17.Bc4 Re7 (17...h6 18.Rhf1 Bb6 19.g4 with attack) 18.Rhf1 Be3 19.g4 Kh8 20.Nh4 (20.g5 Ne8=+) 20...h6 21.Ng2 Bc5 22.g5 hxg5 23.Qxg5 Rd8 unclear) 15.Qxe5 Bd6 16.Qd4 c5 17.Qc4 Be6 18.Qa6 Rfd8 19.Bc4 Bc8 20.Qa4 Bb7 with compensation) 12.Ng3 Nc5

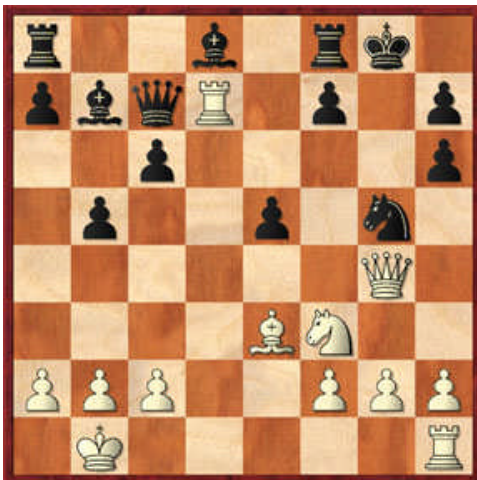
13.Bg5 (13.Nf5? Bxf5 14.exf5 e4+) 13...Be6= **11.Ne2 Qc7 12.Ng3 Nc5?+/-** Continuing on a broken path. 12...Rfd8 13.Nf5 Bf8= **13.Nf5 Ncxe4?+-** OOPS. Not the greatest moment in my chess life. 13...Nxd3 14.cxd3 Rfe8=; 13...Nfxe4? 14.Bxe4 Nxe4+- amounts to the same thing. **14.Bxe4 Nxe4**



15.Qd7! I missed this completely. **15...Bd8** It took a while for me to find this but this should also lose. **16.Nh6+?-/+** A blunder in return. My opponent went into deep thought before coming up with this attacking try. **16.Qxc7** is an easy win. **16...Bxc7** **17.Ne7+ Kh8** **18.Rd7+-** **16...gxh6** **16...Kh8?** is out of the question. **17.Nxf7+ Rxf7** **18.Qe8+! Rf8** **19.Qxf8#** **17.Qg4+**



Wins back the knight. **17...Ng5!-/+** But the knight has a better way to give its life than on e4. **18.Rd7??-+**



Going from bad to worse. The hope is to win a tempo before getting in h4 or taking on g5. **18.Nxg5 f5!** **19.Ne6+ fxc4** **20.Nxc7 Bxc7** **21.Rd7 Rf7+-** saves the piece; **18.Bxg5 hxg5** **19.Nxg5 f5!** **20.Qg3 Bxg5** **21.Qxg5+ Kh8+-** **18...f5!** Now it's over, White cannot avoid losing a piece. **18...Bc8** also wins. **19.Rxc7 Bxg4** **20.Rxc6 Bxf3** **21.gxf3 Nxf3** **22.Bxh6 Re8+-** ; **18...Qc8?** is White's hope. **19.Rhd1 f5** Now this fails miserably. **20.Qh5 f4** **21.Bc5 Bf6** **22.Qxh6 Rf7** **23.Nxe5 Bxe5** **24.Rd8+!+-** **19.Rxc7 fxc4** Black comes out ahead in the eating contest. **20.Rxb7 gxf3** **21.gxf3** The smoke as cleared and all that is left is to cash in on the extra piece as efficiently as possible. **21...Rf7** Forcing White to give up the active rook is the easiest way to win. **22.Rxf7 Nxf7** **22...Kxf7** **23.f4 exf4** **24.Bxf4 Bb6+-** **23.f4 Bf6** **24.fxe5 Bxe5** **25.Rd1 a6** White is just down a piece for nothing. **0-1**

BROWSING FOR ENDGAMES by Dan Scoones

In this instalment we are going to see another example of a long-range bishop overcoming a short-stepping knight.



Toubale – Villavieja, Paul Keres Memorial 2011

Black to play

There is no doubt that Black stands better. When a single pair of pawns has been exchanged the bishop's mobility is often restricted, which generally favours the side with the knight. However, one must always consider the concrete situation. In this case White's pawns are all on light squares, where they are natural targets for Black's bishop. Add to this Black's space advantage and more active pieces and it is clear that White will have to defend accurately if he is going to save the game.

36...Ke5 37.Ke2 h5 38.c3? It is natural to want to take the d4 square away from Black's king, but 38.c3 has the drawback of transferring White's main queenside weakness from c2 to the more vulnerable square b3. More tenacious was 38.Nd1 f4 39.Kd3 g4 40.hxg4 hxg4 41.Kd2, maintaining a compact defensive position.

38...h4! Fixing White's kingside pawns on light squares so they can be attacked more effectively.

39.Nc2



39...b5!?

The direct 39...g4! was also quite effective, for example:

- a) 40.fxg4 fxg4 41.hxg4 Bxg4+ 42.Ke3 Bd1 and Black wins;
- b) 40.Ne1 gxh3 41.gxh3 Kf4! 42.Kf2 Kg5 43.Nd3 f4 44.Kg2 Bf5 45.Nc1 Kf6 46.Kh2 Ke5 47.Kg2 Kd6 48.Kh2 b5 49.cxb5 cxb5 50.axb5 and now 50...c4! 51.bxc4 a4 wins easily for Black.

The theme is always the same: take action on both wings and overstretch the defenders.

40.axb5 cxb5 41.cxb5 Bxb3 42.Na3 Bd5

The downside of the move 38.c3 has come to light. Black has a passed a-pawn plus an attack against White's kingside pawns; meanwhile his bishop and king will have no trouble dealing with White's passed b-pawn.

43.c4

Or 43.Kd3 Kf4 44.Nc4 (or 44.Nc2 Bb7 45.Ne1 a4 46.c4 Kg3 and Black wins) 44...Kg3 45.Ne3 Bb7 46.Nxf5+ Kxg2 47.f4 gxf4 48.Nxh4+ Kxh3 49.Nf5 a4 50.b6 f3 and Black wins easily.

43...Bb7 44.Ke3 a4 45.Nc2



45...Kd6

Also possible was 45...g4 46.hxg4 fxg4 47.Kf2 (or 47.fxg4 Bxg2, etc.) 47...gxf3 48.gxf3 Kf4 49.Kg2 Bxf3+ 50.Kh2 Bb7 51.Na3 Bc8 and wins.

46.Kf2 Bc8 47.Ke3 Be6 48.Na3 Kc7 49.f4

Or 49.Kd3 g4 50.fxg4 fxg4 51.hxg4 Bxg4 52.Ke3 Bc8 53.Kf4 Kb6 54.Kg5 Ka5 55.Kxh4 Kb4 56.Nb1 a3 57.Nxa3 Kxa3 58.b6 Kb4 59.g4 Kxc4 60.g5 Kb5 61.g6 Kxb6 62.g7 Be6 and Black wins.

49...g4 50.Kd2 Kb6

Black might have repositioned his bishop to attack White's g-pawn with 50...Bc8!? This too should win easily, for example, 51.Nc2 (or 51.Ke2 Bb7 52.Kf2 g3+ 53.Kf1 Be4 and White is totally

paralysed) 51...Bb7 52.hxg4 fxc4 53.Ne3 h3 54.gxh3 gxh3 55.Ng4 Bc8 56.Nh2 Be6 57.Kc3 Kd6 58.f5 Bxf5 59.Kb2 Kc7 60.Ka3 Bc2, etc.

51.Kc3 Bc8 52.Nc2 Bb7 53.Ne3 Bxc2 54.hxg4 h3!?

Black wins a piece after 54...fxg4 55.f5 h3 56.f6 h2 57.f7 h1Q 58.f8Q Qa1+ 59.Kd3 Qd4+ 60.Ke2 Bf3+ 61.Kf2 Qd2+ 62.Kg3 Qxe3 but then White has a few checks with his queen, which might be awkward. It is understandable that Villavieja did not want to give his opponent even a semblance of counterplay.

55.Nxf5 Bf3 56.g5 h2 57.Ng3 Be4 58.Kb2



58...h1Q?

Black has conducted this complicated endgame almost perfectly, but just when the win is in sight he falters and allows his opponent to escape with a miracle draw. Before cashing in the h-pawn Black should insure the capture of White's c-pawn with **58...Bd3!** After that there are two main lines:

- a) 59.Kc3 a3 60.Kb3 Bxc4+ 61.Kxa3 Bd3 62.Kb2 Kxb5 63.Kc3 Bh7 and wins;
- b) 59.Ka3 Bxc4 60.Kxa4 Bd3 61.Kb3 Kxb5 62.Kc3 c4 63.Nh1 Kc5 64.Nf2 Kd5 65.Nh1 Bf5 66.Ng3 Be4 67.Kd2 Kd4 68.Ne2+ Kc5 69.Ng3 Kb4 and one of Black's pawns must promote.

59.Nxh1 Bxh1 60.f5! Be4 61.f6! Bg6

Here is the difference, and the problem: Black can never capture the c-pawn because White would then play g5-g6 followed by f6-f7. There is nothing left but a repetition of moves.

62.Ka3 Ka5 63.Kb2 Bf7 64.Ka3 Be8 65.Kb2 ½–½

The 6th Annual Grand Pacific Open

A 6 round FIDE and CFC rated Swiss. \$5000 Guaranteed Prize Fund

The Grand Pacific Open is BC's largest chess tournament and this will be its 6th annual! The prize fund this year has been increased to a guaranteed \$5000. The main event is a 6 round FIDE and

CFC rated Swiss with \$5000 in prizes. There are also a number of side events which are free if you play in the main event and include an active tournament, Midnight Blitz with \$100 in prizes, and a Bughouse tournament to finish off the weekend.

The tournament hall itself is the very nice ballroom at the 5 Star Grand Pacific Hotel. The hotel is located on the Inner Harbour in downtown Victoria, close to tourist destinations and across the street from the Seattle Clipper and Coho ferry connections.

Come join us Easter 2012 in Victoria for the Grand Pacific Open!

Grand Pacific Open Details:

Registration: On line registration to be posted starting Sept. 2011. You can also contact us at: grandpacificopen@gmail.com. A hard copy of the registration form (and cheque) can be mailed to: Victoria Junior Chess Society, 2386 Dalhousie St. Victoria, BC V8R 2H6 payable to Victoria Junior Chess Society. Do not mail cheques or registration after April 8. Onsite registration for the Grand Pacific Open is from 4:00-5:30 Friday April 22. Registration after 5:30 does not guarantee a Swiss pairing.

Sections: Open (FIDE and CFC rated); U1400 (CFC rated)

Round Times Round Times Rd 1 at 6:00 pm Friday April 6; Rds 2 and 3 at 12:00 noon and 6:00 pm Saturday April 7; Rds 4 and 5 at 12:00 noon and 6:00 pm Sunday April 8; Rd 6 at 10:00 am Monday April 9

Prize Fund: \$5000 Guaranteed: Open Section: \$1150+Trophy, \$700, \$450 U2100 \$450+Trophy, \$350 Top BC Player qualifies for BC Closed. U1800 Section: \$400+Trophy, \$300; U1500 \$350+Trophy, \$250; Top Unrated (Highest score in either section) \$100 Biggest Upset \$100; Top Women \$80, \$70, \$60, \$50, \$40 (in addition to any other prize; Courtesy of Goddess Chess); Top Junior \$100 (Courtesy of Yaron Gvili)

Prize Fund: \$5000 Guaranteed: **Entry Fee** \$75 registered and paid on or before Feb. 24, \$85 registered on or before March 30, \$95 on site. Discount \$20 if rated U1400 or unrated. Add \$20 if playing up a section and rated U1700 or unrated. Non CFC members add \$16 (adult) or \$8 (junior)

Misc: Unrated players are not eligible for class prizes. The 'Unrated' prize is won by the unrated player with the most points in either section. U1400 players may play in the Open but are then not eligible for the U1400 prize. 1st tiebreak for non cash prizes is individual cumulative score. 2nd tiebreak is cumulative score of opponents. Biggest upset prize may be in addition to any other prize won. Half point byes for rounds 1-5 if requested before the start of round 1. Prize ceremony at 2:15 on Monday, April 25. BCCF membership is included in entry fee. All chess equipment provided.

Side Event Details:

Side Event Entry Fee: For all side events, FREE if registered in the main event, the Grand Pacific Open. Otherwise, \$10 gets you a pass to all side events. CFC membership not required for any of the side events.

Side Event Registration: On line registration to be posted starting Sept. 2011. You can also contact us at grandpacificopen@gmail.com.

Grand Pacific Active: A 4 round active event open to all: April 6 12 noon - 5pm, G/25min+5 sec increment,

Midnight Blitz: April 7 10pm or ASAP to midnight, G/5min, 5 double round Swiss, 1st \$50, U1800

\$25, U1500 \$25

Grand Pacific Bughouse April 9 2:30pm - 4pm, G/5min, 5 round Swiss

Sections: Open (FIDE and CFC rated); U1800 (CFC rated)

Time Control: Game in 90 minutes with a 30 second increment

Misc: Unrated players are not eligible for class prizes. The 'Unrated' prize is won by the unrated player with the most points in either section.

Top Junior means less than 20 years old April 6 2012 U1800 players may play in the Open but are then not eligible for the U1800 prize. Players playing up a section AND rated U1700 or unrated add \$20 to entry fee. 1st tiebreak for non cash prizes is individual cumulative score. 2nd tiebreak is cumulative score of opponents.

Biggest upset prize and top women prize may be in addition to any other prize won. Half point byes for rounds 1-5 if requested before the start of round 1. Prize ceremony at 2:15 on Monday, April 25. BCCF membership is included in entry fee. All chess equipment provided.

Accommodation: Same great location at the Grand Pacific Hotel! \$99 room rate available. Quote APR12Chess for this great rate. www.grandpacificopen.com Toll Free: 1-800-663-7550 Phone: 250-386-0450 Email: reserve@hotelgrandpacific.com

Contact us at: grandpacificopen@gmail.com

TD: Mark S. Dutton, IA

Organizers: Brian Raymer, Paul Leblanc, Roger Patterson

UPCOMING EVENTS

Junior

<http://www.bcjuniorchess.com/calendar/>

<http://victoriajuniorchess.pbworks.com/Tournament-Schedule>

UBC Thursday Night Swiss

Thursdays, 6:30 pm, Irving K. Barber Learning Centre room 158, 1961 East Mall, University of British Columbia entry fee \$21 adult, \$16 junior Contact Aaron Cosenza, xramis1@yahoo.ca

For details of the following see www.chess.bc.ca

Grand Pacific Open

April 6-9, Victoria

Paul Keres Memorial

May 19-21, Richmond

June Active 1

June 3, Vancouver Bridge Centre

June Active 2

June 17, Vancouver Bridge Centre

Canadian Open

July 8-13, Victoria

U.S. Open

August 4-12, Vancouver WA