

BCCF E-MAIL BULLETIN #212

Your editor welcomes any and all submissions - news of upcoming events, tournament reports, and anything else that might be of interest to B.C. players. Thanks to all who contributed to this issue.

To subscribe, send me an e-mail (swright2@telus.net) or sign up via the BCCF webpage (www.chess.bc.ca); if you no longer wish to receive this Bulletin, just let me know.

Stephen Wright

HERE AND THERE

Doroshenko Simul (April 1) by Joe Roback (SFU Chess Club)



The Doroshenko Simul was a fundraiser, in collaboration with Free the Children, in which proceeds were donated to the Net-Impact project to aid Sierra Leone with education, agriculture, health, and infrastructure, among other endeavours. Twelve players competed and notable games include draws from Brent McLean, Ryan Lo, and Paul McNichol.

Maxime (Max) Doroshenko is originally from Moldovo and emigrated to Russia during which time he competed in the world juniors in the early '90's. Recently, he tied for first place in the 2011 BC Active Championship with Mayo Fuentesbella. He moved to Canada in 2010 is currently enrolled in the MBA Program at SFU.

A special thanks to Brent and Ed from the Port Coquitlam Club for lending equipment

Yoos Simul (March 27)

'Tis the season for fundraising simul, apparently. The Sunday before the above Doroshenko event, B.C. Champion Jack Yoos gave a simul to benefit the Keres Memorial. Taking on fourteen players, Jack scored +9 =4 (Vas Sladek, Don Monteith, Javid Mavaddat, Samuel Chen) -1 (Ryan Lo).

[Report with photos](#)

March Active (March 27)

A familiar name in the winner's circle, Butch Villavieja took first place in the latest monthly active event with a perfect 4.0/4. Second was a recent returnee to competitive chess, Alexey Lushchenko, with 3.5, while Len Molden and Payam Mousavi tied for the U2000 prize, Javid Mavaddat won the U1700, and Lionel Han scored the biggest upset by beating Jofrel Landingin.

[Crosstable](#)

April 11 Early Bird Deadline

An early bird deadline for entering the [Keres Memorial](#) is coming up on April 11, and entry fees will cost more after that date. So if you are intending to play in this year's Keres, sign up before the 11th and save yourself some money!

Wanted - Chess Players

Brock House Society, 3875 Point Grey Road, Vancouver, Activity Centre for Seniors, has a Chess Club which meets every Tuesday and Thursday at 1 o'clock. We welcome anyone to join our group. Brock House has many other activities also - including an inexpensive cafeteria. For all information email Bill Fry fryinfo@shaw.ca Look forward to hearing from you!!

U.S. SOUTHERN OPEN (Orlando, April 1-3) by Paul Leblanc

I had the good fortune to be able fit in the US Southern Open in Orlando 1-3 April, with a vacation to visit friends in Jamaica. There were about 180 entries in several sections, including three GMs in the Open Section. I was the only foreigner aside from my Bahamian friend Byron Small from Nassau.

The tournament was run by Harvey Lerman, President of the Florida Chess Association. According to Harvey, he is also the Treasurer, Tournament Organizer and chief bottle washer since there don't seem to be many chess players interested in organizing (sound familiar?). The site was the Wyndham Resort Hotel, a very nice hotel with outdoor swimming pools, gardens, poolside bar and restaurant and excellent service. The cost was very reasonable, especially with the recently accelerating Canadian dollar.

Chess activity in Florida has been gradually declining over the past twenty years but the Florida chess community seemed to come out of the woodwork for the Southern Open. Encouraging was the large number of juniors at the tournament and the success of the junior programme in Florida schools.

I played in the U2100 Section and achieved a 3 out of 5 result. I managed to perform a little above my USCF rating so that was encouraging. My only loss was to Boris Veksler who finished first on tiebreak in my section. I also faced three juniors, including two strong young girls. All of my opponents played an aggressive kingside attack style of chess, regardless of positional considerations, something I've gotten used to in US tournaments.

All in all it was a pleasant start to my holiday.

[USCF crosstable](#)

Veksler, Boris - Leblanc, Paul [D15] US Southern op Orlando (3), 02.04.2011

1.d4 d5 2.Nf3 Nf6 3.c4 c6 4.Nc3 a6 5.g3 e6 Too passive. Boris suggested 5...dxc4 in the post-mortem. 5...b5 could also be considered. **6.Bg2 Nbd7 7.0-0 Be7 8.Qd3 0-0 9.e4 dxe4 10.Nxe4 Nxe4 11.Qxe4 Nf6 12.Qc2 c5 13.dxc5 Bxc5 14.Bg5 h6 15.Rfd1 Qe7 16.Bf4 a5 16...b5** would be more accurate. **17.Ne5 Ra6 18.Rd3 g5 19.Bd2 Qc7 20.Bc3 Nd7 21.Ng4 e5 22.Rad1 f5** Although White seems better, Black has resources. **23.Rxd7**



White sacrifices the exchange. **23...Bxd7 24.Bd5+ Kh7 25.Bxe5 Qc8 26.Qd3 Be6** With equal chances according to Fritz 11. **27.Bg2? Bxc4!** White overlooked this. **28.Qc2 Rg6 28...b5 29.b3 Bxb3 30.Qxb3 fxe4** gives Black the advantage. **29.Ne3 Be6** A weak move. **30.Bxb7 Qxb7 31.Qxc5 Rc8= 32.Qxa5 f4 33.Nd5 Bxd5 34.Qxd5 Qxd5 35.Rxd5 f3?** With visions of a back rank threat but leaving this pawn hanging out to dry later on. **36.h3 Re6 37.Bc3 Kg6 38.g4 Rf8 39.Rd7 Rf7 40.Rd8 Re2** and quite simply Veksler outplayed me in the resulting endgame. **1-0**

JACK YOOS ANNOTATES

With the annual Grand Pacific Open coming up fast, we present Jack's games from last year's event.

Day, Lawrence - Yoos, Jack [B24] Grand Pacific op 4th Victoria (4), 04.04.2010

A tough pairing colour-wise. As Black it is much more difficult to get Lawrence away from his type of position. Lawrence's type of position is usually closed, unconventional, and original. **1.e4 c5** The following summer when I was in Toronto, my friend Eddie Urquhart advised me that this was a bad decision. Lawrence is a reknowned expert in the Closed Sicilian with tremendous experience. He said that locally the players in Toronto no longer play 1...c5 against Lawrence. **2.Nc3 Nc6 3.g3 g6 4.Bg2 Rb8** This odd move order was introduced to me by Georgi Orlov. Spassky, Ljubojevic and Taimanov all tried it. The move order does not constitute a unique variation in itself as ultimately if the position remains closed, Black has to choose between a structure with the pawn on ...e5, ...e6 or ...e7 and then it will transpose to known positions. Its purpose is directed against White playing Be3 and Qd2. The idea is to bump the knight on c3 quickly so that the b2 pawn is vulnerable on the diagonal. This has more of a psychological effect than anything. Be3-Qd2 is not superior to other lines, but it is by far the most loved. **5.d3 b5 6.Be3 b4 7.Nce2 7.Na4 d6 7...Bg7 8.d4** The most ambitious. I was surprised by this as I expected that Lawrence would prefer to keep the position

closed against me. 8.Qc1; 8.c3; 8.Bxc5? with weaknesses on b2 and a2; 8.Rb1? with a weakness on a2. **8...cxd4** Accepting the invitation. I assumed that I would feel more comfortable in an open Sicilian position. 8...Qa5 9.Nf3 Ba6 10.d5 Ne5 11.Nxe5 Bxe5 12.Bf4 Bxe2 13.Kxe2 (13.Qxe2 Bxb2) 13...Qa6+ 14.Qd3 c4 15.Qe3 d6 16.Bxe5 dxe5 17.Bf1 Nf6 18.Kf3 Qc8 19.h3 0-0 20.Kg2 e6 21.dxe6?! (21.Rd1) 21...Qxe6 22.Be2 Qc6-/+ Lucas Davies - Charbonneau, Canadian ch, 2004
9.Nxd4 In the long term White's kingside could become a target. In the short term Black has to be careful as White's bishops, presently unopposed, are quite threatening. **9...Ne5**



A critical position for this opening. Here White must find a good continuation if Black is to be tested. Black will be quite comfortable if given time to develop. 9...Na5 10.b3 or (10.Qd3) ; 9...Qc7 **10.Nb3 Nc6 11.Rb1?!** This gives Black a chance to take a breath. Considering the resulting opening position, the best move might have been to repeat moves with 11.Nd4 Na5 12.Nb3 Nc6 13.Nd4= **11...d6 12.Nd4 Bd7** Unless White has something concrete here, Black is better, having reached a favourable form of Sicilian Dragon. **13.Nxc6 Bxc6 14.Bxa7?!** This is risky. Black is fairly active and so the time spent could be very expensive. **14...Ra8 15.Bd4 Nf6 16.Qd3**



16...Qa5 Unnecessary. I mistakenly thought I needed to address the threat of ...Qc4-Qxb4. However, in hindsight if I had played more actively the pawn would have been poisonous. It is better to take back the pawn with 16...Rxa2! 17.Qc4 (17.Ne2 0-0 18.0-0 e5 19.Be3 Qa8 20.Qxd6 Nxe4 21.Qxb4 Nxc3 22.fxc3 Bxc2 23.Rf2 Rb8 24.Qc3 Bd5-/+ and black's active long range pieces are dominating the open board.) 17...Qa8 18.Qxb4?! (18.f3 0-0 19.Ne2 d5 20.exd5 Bxd5 21.Qd3 e5-/+) 18...Ra4 19.Qc3 (19.Qd2 Nxe4) 19...Bxe4 20.f3 Nd5 21.Bxc3 Nxc3 22.Bxc3 Bxc2-+ **17.Ne2 0-0** 17...b3+?! 18.Bc3 bxa2 19.Ra1 Qb6 20.0-0 0-0 21.Nd4 Bb7 22.Rfd1 Nd7 23.Nb3 Bxc3 24.Qxc3 Rfc8 25.Qd2 Nf6 26.Re1 Ra4-/+ (weakness on e4) 27.e5 Ne4; 17...e5 18.Be3 d5

Achieving ...d5 avoids the kind of motif that occurred in the game. 19.exd5 Bxd5 20.Bxd5 Qxd5 21.Qxd5 Nxd5 22.Ra1 Ke7 23.c3 Nxe3 24.fxe3 bxc3 25.Nxc3 Rhb8 26.Nd5+ Kf8 27.e4 Rxb2 28.a4 Rc8 29.a5 Rcc2 with counterplay. **18.0-0 e5?!** Inflexible. 18...Qxa2 19.c4 Qa6 20.Rfd1 Qb7-/+ **19.Be3 Bb5 20.Qd1 Qxa2 21.Re1 Rfc8** 21...Rfd8 22.Bg5 h6 23.Bxf6 Bxf6 24.c3 b3 25.Qd2 Bc4 26.Rbd1 Kg7 27.Kh1 Qa7 28.Nc1 Qb6 29.Nd3 d5=/+ **22.Bg5! Qc4?!** This allows c3 which activates the bad knight on c3. 22...Rc6 **23.Bxf6!** Well played. This takes the teeth out of my position and shows why it was a mistake to commit with ...e5 without having a specific follow up. **23...Bxf6 24.c3 Qc5 25.cxb4 Bxe2** To prevent the knight from getting to d5. **1/2-1/2**

Moore, Harry - Yoos, Jack [A25] Grand Pacific op 4th Victoria (5), 04.04.2010

Another tough pairing for me. Harry is one of the few local players who has beaten me more than once. **1.c4 e5 2.Nc3 Nc6** I like Sicilians of every size, shape, and colour. **3.g3 g6 4.Bg2 d6 5.d3 Bg7 6.Rb1 a5 7.a3 f5 8.e3** This set up is less sharp than Nf3 as it's less likely to be a straight race on the wings. **8...Nf6 9.b4 axb4 10.axb4 0-0 11.Nge2 Ne7 12.0-0** 12.f4 c6 13.0-0 Be6 14.b5 Bf7

15.h3 1/2-1/2 Teplitsky-Yoos, Keres Memorial, Vancouver 1999. **12...c6 13.b5 Be6 14.Qb3 g5**
 This is more aggressive than what's usually played here. To keep up the pace with Grund and Day, this was a must win and so I decided to play sharply. 14...Bf7 15.Rd1 Qc7 16.Rd2 Ra5 17.Ra2 Rfa8 18.Rxa5 Qxa5 19.Bd2 Qa3 20.Qc2 d5 21.bxc6 bxc6 22.cxd5 cxd5 23.Nb5 Qa2 24.Qd1 Qa4 Ljubojevic-Seirawan, Novi Sad Olympiad 1990; 14...Re8 **15.f4 gxf4 15...h6!? 16.gxf4 Qe8?!** In hindsight I think my plan to activate was a bit superficial. 16...Kh8 17.Kh1 Rg8 unclear. **17.fxe5 dxe5 18.Ba3! Ng4**



19.Rf3? 19.Bc5+/- Bh6 20.Rf3 and now the whole ...e4 thing does not work since Rg3 is a check. 20...Rf7 21.h3 and Black has to back off. **19...e4! 20.dxe4 20.Rg3 exd3 21.Nf4 Qf7 20...Ne5** With the initiative. **21.Rg3 Bxc4 22.Qb4 N7g6?** 22...Rf7 and the Ba3 is a problem - keeping the option of recapturing on f5 with the knight limits White's options. 23.Nd4 (23.Nf4 Kh8 24.Nh5 Bf8) 23...Kh8 24.exf5 Bf8 25.Ne6 Nxf5 26.Nxf8 Nxf3 27.hxf3 Nf3+! 28.Bxf3 Qxe3+ 29.Kh2 Rxf3 30.Qxc4 Rxf3 31.Qf1 Rf3-+ **23.bxc6 bxc6 24.exf5?** Forcing the rook off f8 opens the square for the bishop. 24.Nd4 unclear; 24.Nf4!? with the idea of Nh5 **24...Rxf5 25.Nd4 Rf7?** This gives White time to maneuver the knight to d6. 25...c5 26.Qxc5 Nf3+/-/+; 25...Bf8 26.Nxf5=/+



26.Bc1? Retreating cedes the initiative. 26.Ne4 Bf8 27.Nd6 is unclear - my intention during the game was to play 27...Qd7?! but after 28.Nxc4! White gets a lot in return for the queen. 28...Bxb4 29.Nxe5 Qc7 30.Nxf7 Bxa3 31.Bxc6; 26.Nxc6? Rxa3 **26...Rc8 27.Ne4?** 27.Nde2-/+ **27...c5 28.Nxc5 Bf8 29.Nc6?** 29.Ndb3 Rb8-+ **29...Rxc6 30.Bxc6 Rf1+ 0-1**

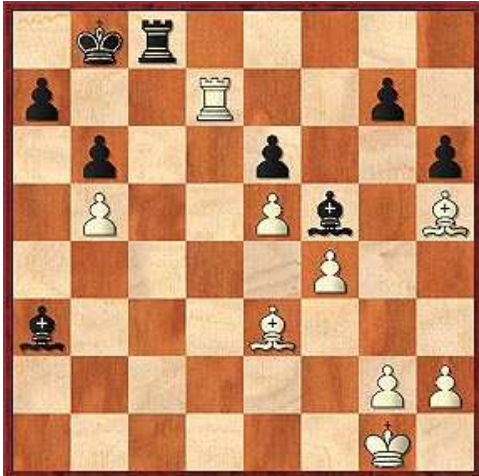
Yoos, Jack - Grund, Holger [B12] Grand Pacific op 4th Victoria (6), 05.04.2010

Paired against the top rated player in the last round, the pressure was on as I needed a win to make sure I kept up with Lawrence Day. **1.e4 d5 2.d4 c6 3.e5 Bf5 4.Nf3 e6 5.Be2 Ne7 6.0-0 h6 7.a3 Nd7 8.Nbd2 Bh7** I had expected this much from the games I found online. **9.b3 c5?!** Although this is common, I think it's questionable. Black is a bit undeveloped to be opening the position up. **10.dxc5 Nxc5 11.b4 Ne4?!** This is overestimating Black's position. One of the themes in this opening is that with the light-squared bishop away on the kingside, Black's queenside and central light squares are vulnerable. When the position opens up this vulnerability becomes significant. Allowing an exchange of one of the defenders makes it worse. Surprisingly, when I looked this position up, only Black has done very well here. I think this just shows that in chess you need to think for yourself. 11...Nd7 12.c4+/- **12.Nxe4 Bxe4 13.Nd2 Bh7 14.c4** I won't quote previously played games because I found them imprecise, but right around here is where play

became original. **14...dxc4** 14...Nc6 15.Bb2 Be7 16.Bf3 Qd7 17.cxd5 exd5 18.Nb3 Rd8 19.b5 Nb8 20.Nd4 0-0 21.Re1+/- **15.Nxc4 Qxd1** 15...Nd5 16.Qa4+ Qd7 17.Nd6+; 15...Nf5 16.Qa4+ Qd7 17.Qxd7+ Kxd7 18.Rd1+ Kc7 19.Bb2; 15...Nc6 16.Qa4 Qc7 17.Bb2 Be7 18.Rac1 **16.Rxd1 Nd5** 16...Nc6 17.b5 **17.Bf3 0-0-0 18.Ne3** Black cannot hold back the flood. **18...Nxe3 19.Rxd8+ Kxd8 20.Bxe3 b6 21.Rc1+/-**



Black's king is boxed in and the back two ranks are vulnerable. **21...Be7 22.Bb7 Kd7 23.Bc6+ Kd8 24.f3** 24.Ba4 threatening infiltration on the seventh rank with Rd1-Rd7 also works well. 24...Be4 25.Rd1+ Bd5 26.Bc6+/- **24...Bg5 25.f4 Be7 26.b5 Kc7 27.Be8+ Kb7 28.Bxf7 Bxa3 28...Bf5 29.Rc6; 28...Rd8 29.a4 29.Rd1** Simpler was 29.Rc3! Bb4 30.Rb3+- **29...Bf5 30.Rd7+ Kb8 31.Bh5 Rc8**



32.Bf3?? Horrible! This throws away my chances of winning. It's not that I did not see all of the previous winning continuations, in fact I thought about them considerably. The problem was that I had too many good options and with first place on the line, I wanted to win without risk. There is no such thing as a free lunch. Lesson learned! 32.Rxg7 Rc3 33.Kf2 Rc2+ 34.Kf3 Rc3 35.g4 Bc5 36.gxf5 exf5 37.Kg3 Bxe3 38.Rf7+/-; 32.g4 Be4 33.Bf7 Rc3 34.Kf2 Bd5 35.f5+/- **32...Rc7** Now I have nothing! I totally choked in this game. **33.Rd8+ Rc8 34.Rd1** Denial. I should trade off his rook before it gets too active. The problem is that I had not yet accepted that I screwed things up and I was still trying to win. 34.Rxc8+ Kxc8 35.Kf2 **34...Rc3** At his point I was very upset with myself and I realized that for reasons of psychology, I was at risk of doing further damage to my position. I therefore decided it was

prudent to find a continuation which secured a half point. **35.Kf2 Kc7 36.g4 Bd3 37.Be2** Extremely disappointing for me. But congratulations to Lawrence Day on first place and a well played tournament. **1/2-1/2**

VANCOUVER AT 125

On Wednesday April 6, 2011 Vancouver officially celebrated its one hundred and twenty-fifth birthday. The charter for the new city of Vancouver, formerly known as Granville, was granted on April 6, 1886, but less than nine weeks later, on June 13, the fledgling city burnt to the ground. However, the new terminus of the transcontinental railway was not to be denied, and the city quickly rebuilt and mushroomed in size (the first train arrived the following May).

Organized chess in Vancouver appears to have begun in August of 1887 with the founding of a club; previous to that time the game was likely played at the various Mechanics' Institutes and Reading Rooms around Burrard Inlet, as chess was encouraged as a "rational entertainment."

Various chess clubs existed in Vancouver in its early years, but it was not until 1913 that a stable institution was founded. Below we present several snippets relating to early chess clubs in Vancouver; for more details of the 1913 club, see [Bulletin #94](#).

"A chess club was formed on Saturday night at the Bank of British Columbia. Messrs. Hirschburg, Hamilton, Keith, Collins, Diplock, Taylor, Hoffar, Innes, and Adams, signified the intention of becoming members. A committee to draw up rules and regulations for the guidance and government of the club was named consisting of Messrs. Innes, Taylor, Keith, and Wolfsohn. After a few friendly games at this Royal sport the meeting adjourned until Saturday evening next at 8 o'clock."

[(Vancouver) *Daily Herald*, Monday 22 August 1887]

"This Club was incorporated under the Benevolent Societies Act in September, 1901. Notice of the incorporation appears in the Gazette of the 19th of September 1901. The objects of the association were stated to be to promote social intercourse, rational recreation and good fellowship among the members. According to the evidence of Mr. Sass, who has been secretary of this Club since it was first organized, the Club has been practically out of existence for a year and a half. On the 13th of June, 1905, thirteen men were convicted, in the Vancouver Police Court, of gambling in the Chess Club rooms. It appears that in March, 1904, the Club had ceased to occupy the rooms in question and had practically gone out of existence. The evidence presented before the commission, however, convinced me that gambling was extensively carried on at the Chess Club rooms while the Club was in existence. One witness testified that, before March, 1904, the Club was frequented by all classes of men and by men of different races, such as Chinese, Japanese, and Negroes. The same witness, who was made use of by the police to obtain information as to the character of these clubs, states that games, such as poker and blackjack, were generally played, and that, although he frequently visited the place, he never saw a chess board there. I would recommend that the charter of this Club be revoked and that the society or association be dissolved." [Deputy Attorney-General Hugh Archibald MacLean, *Commission on the Union Club, Elks Club, Eureka Club, Chess Club, Playgoers Club and Railway Porters' Club* (1905)]

"By the kind permission of the National Loan & Investment Company a meeting was held in one of their offices last Wednesday to discuss the formation of a chess club. It was resolved to hold a further meeting in the smoke room of the Cabin Cafe next Tuesday, 18th inst., at 8 o'clock, principally to discuss the future home of the club. The organizers hope that all those interested will kindly attend." [*Daily News Advertiser*, 16 March 1913]

"The meeting that took place in the Cabin Cafe to form a chess club met with a very satisfactory response, between thirty and forty members being enrolled, and no doubt there will be many others who will join when it is better known. Anyone wishing to become a member kindly send his name to the secretary.

The following rules were drawn up: Vancouver Chess Club, season 1913-1914--President, B.A. Yates; vice-president, A. Stevenson; honorary secretary and treasurer, A. La C. Evans; committee, T.E. Pouris, A.Fraser.

1. The club shall be called the Vancouver Chess Club.
2. The annual subscription shall be one dollar. Entrance fee, one dollar.
3. The subscription and entrance fee to be paid in advance.
4. The officers of the club shall consist of president, vice-president, secretary-treasurer and a committee by whom all the business of the club shall be managed. Any four to form a quorum, the president having the casting vote.

5. All members to be subject to equally divided further charges should the money in hand be found insufficient to meet requirements of the club.
6. The club to meet at the Cabin Cafe.
7. The chess room is open every day until 9 o'clock. Club night, Tuesday and Friday, at 8:30 until 12.
8. In the event of tournaments and matches being arranged the usual laws observed in all chess clubs to govern such games.
9. Notices of general interest to be posted in the club room by secretary.
10. These rules to be permanently hung in the club room." [*Daily News Advertiser*, 30 March 1913]

April Active

Date: Sunday April 10, 2011

Location: Vancouver Bridge Centre, 2776 East Broadway (at Kaslo), Vancouver

Rounds: 4

Round Times: RD1: noon Rd2: 1:30 Lunch Rd3: 3:30 Rd4: 5:00

Type: Regular Swiss.

Time Controls: G/30 + 10 sec. increments or G/35.

Entry Fee: \$15, free coffee and tea.

Prizes: 1st \$100 2nd \$70 BU2000 \$60 BU1700 \$60 Upset \$10 based on 30 entries. The Vancouver Active rating will be used or the CFC regular.

Registration: On site at 11:30am or contact Luc Poitras at (778) 846-0496

Email: lucque@shaw.ca

Bring your chess set and clock if you have one. No membership required

The 5th Annual Grand Pacific Open

A 6 round FIDE and CFC rated Swiss.

\$4000 Guaranteed Prize Fund

Dates: April 22-25, 2011

Registration: On line registration to be posted starting Sept. 2010. You can also contact us at: grandpacificopen@gmail.com. A hard copy of the registration form (and cheque) can be mailed to: Victoria Junior Chess Society, 2386 Dalhousie St. Victoria, BC V8R 2H6 payable to Victoria Junior Chess Society. Do not mail cheques or registration after April 8. Onsite registration for the Grand Pacific Open is from 4:00-5:30 Friday April 22. Registration after 5:30 does not guarantee a Swiss pairing.

Sections: Open (FIDE and CFC rated); U1400 (CFC rated)

Round Times Rd 1 at 6:00 pm Friday April 22; Rds 2 and 3 at 12:00 noon and 6:00 pm Saturday April 23; Rds 4 and 5 at 12:00 noon and 6:00 pm Sunday April 24; Rd 6 at 10:00 am Monday April 25

Prize Fund: \$4000 Guaranteed: Open Section: \$1000+Trophy, \$600, \$400 U2000 \$400, \$300 U1700 \$350, \$250; Top BC Player qualifies for BC Closed. U1400 Section: \$300, \$200; Top Unrated (Highest score in either section) \$100 Biggest Upset \$100 Top BC Resident in the Open qualifies for the BC Closed.

Entry Fee (Open) \$75 registered and paid on or before March 15, \$85 registered on or before April 15, \$95 on site. Non CFC members add \$16 (adult) or \$8 (junior)

Entry Fee (U1400) \$55 registered and paid on or before March 15, \$65 registered on or before

April 15, \$75 on site. Non CFC members add \$16 (adult) or \$8 (junior).

Misc: Unrated players are not eligible for class prizes. The 'Unrated' prize is won by the unrated player with the most points in either section. U1400 players may play in the Open but are then not eligible for the U1400 prize. 1st tiebreak for non cash prizes is individual cumulative score. 2nd tiebreak is cumulative score of opponents. Biggest upset prize may be in addition to any other prize won. Half point byes for rounds 1-5 if requested before the start of round 1. Prize ceremony at 2:15 on Monday, April 25. BCCF membership is included in entry fee. All chess equipment provided.

Side Event Details:

Side Event Entry Fee: For all side events, FREE if registered in the main event, the Grand Pacific Open. Otherwise, \$10 gets you a pass to all side events. CFC membership not required for any of the side events.

Side Event Registration: On line registration to be posted starting Sept. 2010. Onsite registration from 1 hour to 15 minutes before the event.

Grand Pacific Scholastic: A 5 round active junior event: April 22 10am - 4pm, G/25min+5 sec increment, CMA rated Two sections only Gr. K-3 and Gr. 4-7 Medals for 1st, 2nd and 3rd in each section

Grand Pacific Active A 4 round active event open to all: April 22 12 noon - 5pm, G/25min+5 sec increment, Rated by the Victoria Chess Club.

Midnight Blitz April 23 10pm or ASAP to midnight, G/5min, 5 double round swiss, 1st \$50, U1700 \$25, U1400 \$25

Grand Pacific Bughouse April 25 2:30pm - 4pm, G/5min, 5 round swiss

Accommodation: Same great location at the Grand Pacific Hotel! \$99 room rate available. Quote APR11GRAND for this great rate. www.grandpacificopen.com Toll Free: 1-800-663-7550 Phone: 250-386-0450 Email: reserve@hotelgrandpacific.com

Contact us at: grandpacificopen@gmail.com

TD: Mark S. Dutton, IA

Organizers: Brian Raymer, Paul Leblanc, [Roger Patterson](#)



Website: <http://www.grandpacificopen.com>

UPCOMING EVENTS

Junior

<http://www.bcjuniorchess.com/calendar/>

<http://victoriajuniorchess.pbworks.com/Tournament-Schedule>

UBC Thursday Night Swiss

Thursdays, 6:30 pm, Irving K. Barber Learning Centre room 157, 1961 East Mall, University of British Columbia

entry fee \$20 for adults \$15 for juniors

Contact Aaron Cosenza, xramis1@yahoo.ca

April Active

April 10, Vancouver

Details: <http://chess.bc.ca/events.shtml#aprilactive>

5th Grand Pacific Open

April 22-25, Victoria

Details: <http://grandpacificopen.pbworks.com/w/page/15387541/FrontPage>

36th Paul Keres Memorial

May 20-23, Richmond

Details: <http://keresmemorial.pbworks.com/w/page/1785469/FrontPage>

B.C. Open

July 30 - August 1, Richmond

Details: <http://victoriachessclub.pbworks.com/w/page/35682117/BC-Open>

Portland Chess Club Centennial Open

August 12-14, Portland, Oregon

Details: http://www.nwchess.com/calendar/PCC_Centennial_Open_201108.pdf