

BCCF E-MAIL BULLETIN #235

Your editor welcomes any and all submissions - news of upcoming events, tournament reports, and anything else that might be of interest to B.C. players. Thanks to all who contributed to this issue. To subscribe, send me an e-mail (swright2@telus.net) or sign up via the BCCF webpage (www.chess.bc.ca); if you no longer wish to receive this Bulletin, just let me know.

Stephen Wright

HERE AND THERE

March Active (March 18)



(Photo by Sophia Hague)

The latest monthly active at the Vancouver Bridge Centre drew a total of thirty-two players for a seven-round event at the sprightly time control of game/10 minutes plus a 5 second increment or game/12 minutes. First prize was taken by a familiar face, Mayo Fuentebella, who only gave up a single draw to second-place finisher Ryan Lo. John Fodor won the U1900 prize with 5.0/7, Max Gedajlovic the U1600 with 4.5/7. The organizer and TD was Luc Poitras. Watch for the next tournament on April 1st. [Crosstable](#)

UBC February/March (February 9 - March 8)

The latest UBC Thursday Night Swiss was won, appropriately enough, by the president of the UBC Chess Club, Clyde Chen. Clyde scored 4.5/5 to finish a half-point ahead of Omar Jessa, who was a further half-point in front of Alice Xiao. Fourteen players participated; the organizer and TD was Aaron Cosenza. [CFC crosstable](#)

Nakamura will play in the Grand Pacific Open

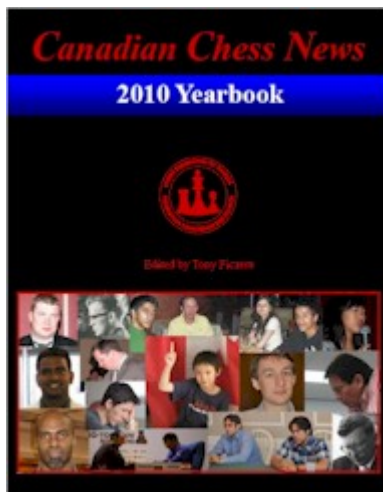
Victoria Chess is pleased to announce that American Grandmaster Hikaru Nakamura, currently the 6th highest rated player in the world, will compete in the 2012 Grand Pacific Open. At age 10 years and 79 days, Nakamura achieved the title of chess master from the United States Chess Federation (USCF), becoming the youngest American ever to earn the title and breaking the record previously set by Vinay Bhat; Nakamura's record stood until 2008 when Nicholas Nip achieved master at the age of 9 years and 11 months. In 1999, Nakamura won the Laura Aspis Prize, given annually to the top USCF rated player under the age of 13. In 2003, at age 15 years and 79 days, Nakamura solidified his reputation as a chess prodigy, becoming the youngest American to earn the grandmaster title, breaking by three months the record of Bobby Fischer. Hikaru currently lives in St. Louis, MO.

The next deadline for early entry in the Grand Pacific Open is March 30th. Visit: <http://grandpacificopen.pbworks.com/w/page/15387541/FrontPage>

Thompson Rivers University Chess Club (Kamloops)

From Sadridin Mirkhodjaev: the Thompson Rivers University Chess Club in Kamloops meets on Thursdays (4-7 pm), and Saturdays (1-4 pm) at the House of Learning (HOL) building at TRU campus, room 161. Our primary email is trusuchessclub@gmail.com, and we also have a facebook group "TRUSU Chess Club", where all relevant information about the club could be found. My cellphone number is 250 682-4305.

2010 Canadian Chess News Yearbook



Features all articles from Canadian Chess News in 2010! Includes Chess Globe, Across Canada and top rating lists for each month. Dozens of photos and articles highlighting the year in Canadian chess. Contributors include: IM Lawrence Day, IM Deen Hergott, NM Kevin Pacey, IM Edward Porper, IM Eric Hansen, GM Victor Mikhalevski ... and many more! Annotated games by IMs and GMs from across Canada and around the world: GM Eugenio Torre, GM Victor Mikhalevski, GM Josh Friedel, GM Jesse Kraai, GM Pascal Charbonneau, IM Lawrence Day, IM Edward Porper, IM Raja Panjwani ... just to name a few! 287 games (275 annotated!) with 807 diagrams! The most comprehensive source of Canadian chess news anywhere! Electronic version also available in PDF format on CDROM at the CFC! Shop at the Chess Federation of Canada for all of your chess needs. Price: \$50, CFC Member: \$45 (add GST & shipping). Visit us online to order at www.chess.ca.

SIRALYI FEBRUARY OPEN (February 17-19) by Michael Yip

Kovolgyi, K - Yip, Michael [C41] Siraly Open February (6), 19.02.2012

1.e4 d6 2.d4 Nf6 3.Nc3 Nbd7 4.Nf3 e5 5.Bc4 Be7 6.0-0 0-0 7.Bg5 c6 8.dxe5 dxe5 The symmetrical structure gives Black immediate and comfortable equality to play from. **9.Qe2** 9.a4 h6 10.Bxf6 Bxf6 11.Ne2 Qb6 12.b3 Rd8 13.Ng3 Qc5 14.Qe2 Nb6 15.Bd3 a5 16.Rad1 Be6 17.Qe3 Qxe3 18.fxe3 Nd7 19.Rd2 Be7 20.Be2 Bb4 21.Rd3 Re8 22.Rdd1 g6 23.Ne1 Bc5 24.Kf2 f5 25.exf5 gxf5 26.Nh5 f4 27.Bc4 Bxe3+ 28.Ke2 Nb6 29.Nf6+ Kf8 30.Nxe8 Bg4+ 31.Nf3 Rxe8 32.h3 Bf5 33.Rd6 Kg7 34.Nh4 Bh7 35.Re6 Rxe6 36.Bxe6 Kf6 37.Bc4 Nxc4 38.bxc4 Bxc2 39.g3 Bxa4 40.Ng2 Bd4 41.gxf4 e4 42.Ne3 Bb3 43.Rb1 a4 44.Kd2 b5 45.cxb5 cxb5 46.Nc2 Bxc2 47.Kxc2 a3 48.Kb3 b4 49.Rd1 Bc3 50.Rd8 Ke7 51.Rc8 Ke6 52.Re8+ Kf5 53.Rf8+ Bf6 54.Ra8 Kxf4 55.Rf8 Kf5 56.Re8 Bd4 57.Rf8+ Ke5 58.Re8+ Kf4 59.Rf8+ Kg3 60.Rd8 e3 61.Re8 Kf3 62.Rf8+ Ke4 0-1 Lukovic, V - Tadic, B /Kragujevac SRB 2011 **9...Qc7** I was interested in getting an ordinary playable position without an early tactical confrontation. 9...h6 10.Bd2 Qc7 11.Rad1 Nc5 12.Be3 b5 13.Bb3 a5 14.Bxc5 Bxc5 15.a4 b4 16.Nb1 Nh5 17.Nh4 Nf4 18.Qf3 Ba6 19.Rfe1 Rad8 20.Nd2 Qe7 21.Nf5 Qg5 22.Nc4 Kh7 23.h4 Qf6 24.Nce3 Bxe3 25.Rxd8 Bxf2+ 26.Qxf2 Rxd8 27.Kh2 Bc8 28.Ne3 Be6 29.g3 Bxb3 30.cxb3 Nh5 31.Qxf6 Rd2+ 32.Kh3 Nxf6 33.Nc4 Rc2 34.g4 Nd7 35.Nxa5 Rxb2 36.Rc1 c5 37.Kg3 Rd2 38.Kf3 Rd3+ 39.Kg2 Rc3 40.Rf1 Nf6 41.g5 hxg5 42.hxg5 Nxe4 43.Rxf7 Kg6 44.Re7 Kf5 45.Nc4 0-1 Olape, B - El Taher, F /Abuja 2003 **10.a3** To keep the bishop on the aggressive diagonal but this does nothing to prevent Black from expanding on the queenside. **10...h6** Questioning the bishop's intentions. **11.Bh4** Now f4 is a potential outpost for Black. 11.Bxf6 Nxf6= gives up the bishop pair too easily. **11...Re8** Continuing with ordinary moves. **12.Bg3 Bf8=** Black concentrates on doing nothing really special. 12...b5 13.Ba2 a5= **13.Rad1 b5** Now Black starts to grab useful queenside space. 13...a5 is also possible. **14.Ba2 a5!?** Now Black has to worry about ...b4 and ..Ba6. **15.Ra1?=/+** Quickly played. 15.Nb1 Nc5=/+ Black has a nice game with White's queenside pieces doing nothing. **15...Ba6 16.Nd1 Nc5** Black sticks to slowly improving his pieces. 16...Nb6 17.Re1 b4 18.Qe3 c5=/+ (18...Ng4 19.Qc1 Black has a nice game.) **17.Nd2 Ne6** 17...Rad8!/?=/+ **18.c3** d4 is covered but now White's position is looking like a sieve. 18.Bxe6 Giving the bishop pair immediately is the lesser evil. 18...Rxe6=/+ **18...Rad8** Refusing to engage in concrete play before fully mobilized. 18...Nf4 makes immediate progress. 19.Bxf4 (19.Qe1 Nd3 20.Qe2 Rad8-/+) 19...exf4 20.f3 Qa7+ 21.Kh1 Rad8-/+ **19.b4?-/+** The price to prevent ...b4 is too high. 19.Bxe6 Rxe6=/+ **19...Nf4** The time for infiltration has come.



20.Qe1?--+ White keeps refusing to part with either of his bishops for the active knight. 20.Bxf4 exf4-/+ **20...c5!** The pawns join the battle to break down White's pawn structure. **21.Bxf4 exf4**

22.f3 Bb7?-/+ An unnecessary preparatory move. 22...axb4! It was now time for concrete play. 23.axb4 cxb4 24.cxb4 Bxb4—+ White cannot really resist with a jumble of chaotically placed pieces and a pawn less. **23.Nb3 axb4 24.axb4 cxb4 25.cxb4 Nd5** Fully exploiting the central rooks. **26.Qe2 Nxb4 27.Bb1**



The time has come to calculate the final forced sequence but Black does not see it. **27...f5—+** Black focuses on breaking down the pawn chain. 27...Bd5! is better but there was more than one way to win. 28.Qb2 Bc4 29.Re1 Nd3 30.Bxd3 Rxd3—+ **28.Kh1** 28.Qxb5 The pawn cannot be taken. 28...Re5! 29.Qe2 Bd5 30.Nd2 Be6 31.Nb2 (31.Nf2 Qc3—+) 31...Qc3! White's pieces are vulnerable. 32.Ndc4 Rc5 33.Ra4 Rxc4 34.exf5 Bf7 35.Nxc4 Bxc4 36.Ba2 Bxa2 37.Rxa2 Bc5+ 38.Kh1 Nxa2 39.Qe6+ Kh7 40.Qxa2—+ Black remains up a piece. **28...fxe4** Consistently opening lines. **29.fxe4 Qe5** Going for the middlegame kill. 29...Qc4 30.Qxc4+ bxc4 31.Na5 Bxe4 32.Bxe4 Rxe4—+ should be an easy win with two extra pawns. **30.Ra7 Bd5 31.Nd2 Bf7 32.Nf3 Qc5 33.Ra5?! 33.Rxf7 Kxf7—+ 33...Bc4** Wins more material. **0–1**

BROWSING FOR ENDGAMES by Dan Scoones

Today's browsing comes from a database of my old tournament games. In the 2003 Labour Day Open in Victoria, Mike Stanford and I got into a minor piece ending that was clearly better for me. Unfortunately, I missed the brass ring and had to settle for a draw.



Scoones – Stanford, Labour Day Open 2003

The queens have just come off and it is Black's turn to move. If he does nothing, White will safeguard his own b-pawn with a2-a3 and then start an attack on Black's b-pawn with Bd4 followed by Bc6. To prevent this plan Black must oppose dark-squared bishops, but this isn't completely trouble-free because it weakens Black's kingside pawn structure.

31...Bf6 32.Bxf6 gxf6 33.Kf2 Kf8 34.Ke3 Ke7 35.Kd4

There are two parts to White's plan: create a passed b-pawn, and exploit an eventual weak pawn on f5. A reasonable-looking approach, but it just doesn't work. Black's short-range knight and centralised king can easily defend against White's threats.

What should White have played instead? We'll get to that after seeing how the game ended.

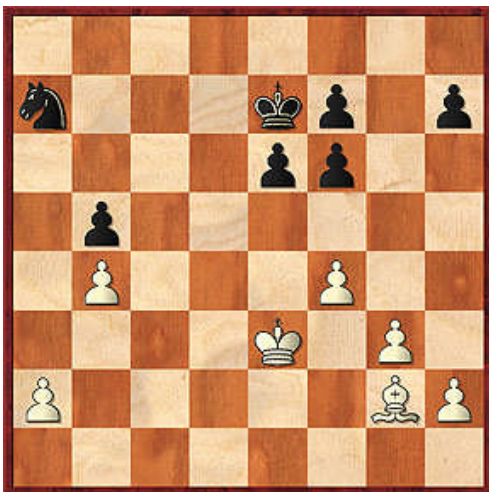
35...Kd6 36.Kc3 f5 37.Bf1 f6 38.Bd3 Kd5 39.Bc2 h6 40.Bb3+ Kd6 41.a4 e5 42.axb5 Nxb5+ 43.Kd3 e4+ 44.Ke3 Nc3 45.h3

I was intending 45.g4 fxe4 46.Kd4 but then noticed the resource 46...Nb1! when Black is fine. In the post-mortem Mike said he was looking at 46...h5 47.Kxc3 h4, thinking that this would win for him. However, it is White who wins after the simple 48.Bc4 since no Black pawn can get to the eighth rank.

45...h5 46.Bf7 Nd5+ 47.Kd4 Nxb4 48.Bxh5 Nc2+ 49.Kc3 Ne3 50.Kd4 Nc2+

In this position the players agreed to a draw (½–½).

Well, that was annoying. Let's go back to the position after Black's move 34...Ke7 and try to find something more effective for White.



White should play:

35.g4!

This restrains Black's f-pawn and prepares the manoeuvre 36.Be4 followed by h4-h5. After this White will have the means of creating a passed pawn on the h-file, and he also sets up a weak Black pawn on f7. After quite a bit of analysis I have concluded that White has a decisive advantage after 35.g4.

35...Kd6 36.Bf1 Kd5 37.a3 h6 38.h4 e5

Also possible is 38...Kd6 39.h5 e5 but White wins after 40.Ke4 exf4 41.Kxf4 Ke6 42.Bh3 Kd6 43.Kf5 Ke7 44.Ke4 Nc8 45.Bf1 Nd6+ 46.Kd5 Kd7 47.Bd3 Kc7 48.Kc5 and the b-pawn is lost.

39.fxe5 Kxe5 40.Bd3 f5 41.Bxf5 Nc6 42.Bd3 Nd4 43.Bb1 Nc6 44.Bf5 Ne7 45.Bd3 Nd5+ 46.Kd2 Nc7 47.g5 hxg5 48.h5 Kf6 49.h6 g4 50.Ke3 Nd5+ 51.Kf2 Nf4

Or 51...Nc7 52.Kxg4 followed by a king march to the queenside.

52.Bxb5

Black has lost his all-important b-pawn through an inexorable *zugzwang*. One of White's queenside pawns will now sprint up the board and force Black to sacrifice his knight. Time to send the pieces back to the box.

The lesson here is simple: when you have a bishop against a knight and play on both sides of the board, try to stretch the defenders as much as possible.

The SFU Open

Date: Friday March 23, Saturday March 24, Sunday March 25th

Location: SFU Burnaby Campus (8888 University Drive) V5A 1S6, Room AQ 5004 (5th floor AQ, middle of the south hallway)

Rounds: 5, Swiss format, all one section

Round Times: Rd1: Fri 5pm Rd2: Sat 10am Rd3: Sat 2pm Rd4 Sun 10am Rd5: Sun 2pm

Time Controls: 1hr30s + 30s.

Entry Fee: \$20 (not including CFC membership)

Prizes: 1st: \$140, 2nd: \$100, U1900: \$80, U1600: \$60 Biggest upset:\$20 (based on 20 entries).

CFC Rated (Current membership or rating calc fee)

Registration: On site at 4:30pm (in AQ 5004)

Email: contact Joe Roback at chess@sfu.ca

Side event: Junior tournament - see below

Please bring your chess sets and clocks Free entry for GMs, IMs, WGMs!

April Active

Date: Sunday, April 1st

Location: Vancouver Bridge Centre, 2776 East Broadway (at Kaslo), Vancouver

Rounds: 4

Round Times: RD1: Noon Rd2: 1:30 Lunch Rd3: 3:30 Rd4: 5:00

Type: Regular Swiss.

Time Controls: G/30 + 10 sec. increments or G/35.

Entry Fee: \$15

Prizes: 1st \$100 2nd \$70 BU1900 \$60 BU1500 \$50 upset \$20 based on 30 entries. The Vancouver Active rating will be used or the CFC regular

Registration: On site at 11:30am or contact Luc Poitras at (778) 846-0496

Email: lucque@shaw.ca

Bring your chess set and clock if you have one. No membership required

The 6th Annual Grand Pacific Open

Easter 2012, April 6-9

A 6 round FIDE and CFC rated Swiss.

\$5000 Guaranteed Prize Fund

The Grand Pacific Open is BC's largest chess tournament and this will be its 6th annual! The prize fund this year has been increased to a guaranteed \$5000. The main event is a 6 round FIDE and CFC rated Swiss with \$5000 in prizes. There are also a number of side events which are free if you play in the main event and include an active tournament, Midnight Blitz with \$100 in prizes, and a Bughouse tournament to finish off the weekend.

The tournament hall itself is the very nice ballroom at the 5 Star Grand Pacific Hotel. The hotel is located on the Inner Harbour in downtown Victoria, close to tourist destinations and across the street from the Seattle Clipper and Coho ferry connections.

Come join us Easter 2012 in Victoria for the Grand Pacific Open!

This is a preliminary posting for the 6th annual Grand Pacific Open. Full details will be posted Sept. 2011. Details subject to change.

Grand Pacific Open Details:

Registration: On line registration to be posted starting Sept. 2011. You can also contact us at: grandpacificopen@gmail.com. A hard copy of the registration form (and cheque) can be mailed to: Victoria Junior Chess Society, 2386 Dalhousie St. Victoria, BC V8R 2H6 payable to Victoria Junior Chess Society. Do not mail cheques or registration after April 8. Onsite registration for the Grand Pacific Open is from 4:00-5:30 Friday April 22. Registration after 5:30 does not guarantee a Swiss pairing.

Sections: Open (FIDE and CFC rated); U1400 (CFC rated)

Round Times Round Times Rd 1 at 6:00 pm Friday April 6; Rds 2 and 3 at 12:00 noon and 6:00 pm Saturday April 7; Rds 4 and 5 at 12:00 noon and 6:00 pm Sunday April 8; Rd 6 at 10:00 am Monday April 9

Prize Fund: \$5000 Guaranteed: Open Section: \$1150+Trophy, \$700, \$450 U2100 \$450+Trophy, \$350 Top BC Player qualifies for BC Closed. U1800 Section: \$400+Trophy, \$300; U1500 \$350+Trophy, \$250; Top Unrated (Highest score in either section) \$100 Biggest Upset \$100; Top Women \$80, \$70, \$60, \$50, \$40 (in addition to any other prize; Courtesy of Goddess Chess); Top Junior \$100 (Courtesy of Yaron Gvili)

Prize Fund: \$5000 Guaranteed: **Entry Fee** \$75 registered and paid on or before Feb. 24, \$85 registered on or before March 30, \$95 on site. Discount \$20 if rated U1400 or unrated. Add \$20 if playing up a section and rated U1700 or unrated. Non CFC members add \$16 (adult) or \$8 (junior)

Misc: Unrated players are not eligible for class prizes. The 'Unrated' prize is won by the unrated player with the most points in either section. U1400 players may play in the Open but are then not eligible for the U1400 prize. 1st tiebreak for non cash prizes is individual cumulative score. 2nd tiebreak is cumulative score of opponents. Biggest upset prize may be in addition to any other prize won. Half point byes for rounds 1-5 if requested before the start of round 1. Prize ceremony at 2:15 on Monday, April 25. BCCF membership is included in entry fee. All chess equipment provided.

Side Event Details:

Side Event Entry Fee: For all side events, FREE if registered in the main event, the Grand Pacific Open. Otherwise, \$10 gets you a pass to all side events. CFC membership not required for any of the side events.

Side Event Registration: On line registration to be posted starting Sept. 2011. You can also contact us at grandpacificopen@gmail.com.

Grand Pacific Active: A 4 round active event open to all: April 6 12 noon - 5pm, G/25min+5 sec increment,

Midnight Blitz: April 7 10pm or ASAP to midnight, G/5min, 5 double round Swiss, 1st \$50, U1800 \$25, U1500 \$25

Grand Pacific Bughouse April 9 2:30pm - 4pm, G/5min, 5 round Swiss

Sections: Open (FIDE and CFC rated); U1800 (CFC rated)

Time Control: Game in 90 minutes with a 30 second increment

Misc: Unrated players are not eligible for class prizes. The 'Unrated' prize is won by the unrated player with the most points in either section.

Top Junior means less than 20 years old April 6 2012 U1800 players may play in the Open but are then not eligible for the U1800 prize. Players playing up a section AND rated U1700 or unrated add \$20 to entry fee. 1st tiebreak for non cash prizes is individual cumulative score. 2nd tiebreak is cumulative score of opponents.

Biggest upset prize and top women prize may be in addition to any other prize won. Half point byes for rounds 1-5 if requested before the start of round 1. Prize ceremony at 2:15 on Monday, April 25. BCCF membership is included in entry fee. All chess equipment provided.

Accommodation: Same great location at the Grand Pacific Hotel! \$99 room rate available. Quote APR12Chess for this great rate. www.grandpacificopen.com Toll Free: 1-800-663-7550 Phone: 250-386-0450 Email: reserve@hotelgrandpacific.com

Contact us at: grandpacificopen@gmail.com

TD: Mark S. Dutton, IA

Organizers: Brian Raymer, Paul Leblanc, Roger Patterson

UPCOMING EVENTS

Junior

<http://www.bcjuniorchess.com/calendar/>

<http://victoriajuniorchess.pbworks.com/Tournament-Schedule>

UBC Thursday Night Swiss

Thursdays, 6:30 pm, Irving K. Barber Learning Centre room 158, 1961 East Mall, University of British Columbia
entry fee \$21 adult, \$16 junior Contact Aaron Cosenza, xramis1@yahoo.ca

For details of the following see www.chess.bc.ca

SFU Open

March 23-25, Burnaby

April Active

April 1, Vancouver Brige Centre

Grand Pacific Open

April 6-9, Victoria

Paul Keres Memorial

May 19-21, Richmond

Canadian Open

July 8-13, Victoria

U.S. Open

August 4-12, Vancouver WA