

BCCF E-MAIL BULLETIN #234

Your editor welcomes any and all submissions - news of upcoming events, tournament reports, and anything else that might be of interest to B.C. players. Thanks to all who contributed to this issue. To subscribe, send me an e-mail (swright2@telus.net) or sign up via the BCCF webpage (www.chess.bc.ca); if you no longer wish to receive this Bulletin, just let me know.

Stephen Wright

HERE AND THERE

Vancouver Regional (February 25)

This year the CYCC is being held in Surrey at the beginning of July, and we are now in the thick of qualifying events for these national junior championships. The first B.C. qualifier was held at Lansdowne Centre in Richmond last Saturday and many of the 156 participants are now eligible to play in the CYCC, also the Provincial Chess Challenge coming up in Victoria at Easter. Further qualifiers take place this coming Sunday, in Surrey and Victoria, while additional events are occurring all across the country. For further information on the CYCC, including lists of qualifiers as they become available, visit the [tournament website](#). [Vancouver Regional results](#)

3rd Jerry Hanken FIDE Open (Stillwater, OK, February 18-20)

Jerry Hanken was a prominent American life master, organizer, and journalist who passed away in 2009. The 2010 U.S. Open was held in his honour, and there have also been a series of FIDE-rated events bearing his name. The third edition was recently held in Stillwater, Oklahoma, and in the forty-eight player open section the top two places were taken by Canadians. IM Eric Hansen outranked the rest of the field by a considerable margin and unsurprisingly took first prize with a perfect 8.0/8; however, WCM Alexandra Botez was ranked tenth going into the competition but scored 6 points (including a half-point bye) to come clear second and gain 70 rating points.

[USCF crosstable](#)

Botez, Alexandra - Langer, Michael [A61] 3rd Jerry Hanken FIDE Open Stillwater USA (3.2), 18.02.2012

1.d4 Nf6 2.c4 c5 3.d5 e6 4.Nc3 exd5 5.cxd5 d6 6.Nf3 g6 7.h3 Bg7 8.Bf4 0-0 9.e3 Qe7 10.Be2 Na6 11.Nd2 Rd8 12.0-0 Bf5 13.Bxa6 bxa6 14.Nc4 Rab8 15.Rc1 Ne8 16.Re1 Qb7 17.e4 Bd7 18.e5 Qb4 19.Ne4 dxe5 20.Nxe5 Rbc8 21.Qf3 Bf5 22.Ng3 Qxb2 23.Nxf5 gxf5 24.Qh5 Qxa2 25.Qxf7+ Kh8 26.Nc6 1-0

Orton, William - Botez, Alexandra [C02] 3rd Jerry Hanken FIDE Open Stillwater USA (5.2), 19.02.2012

1.e4 e6 2.d4 d5 3.e5 c5 4.c3 Nc6 5.Nf3 Qb6 6.a3 Nh6 7.Bd3 cxd4 8.cxd4 Nf5 9.Bxf5 exf5 10.Nc3 Be6 11.0-0 Be7 12.b4 0-0 13.Na4 Qb5 14.Be3 a5 15.bxa5 Rxa5 16.Nc5 Bxc5 17.dxc5 Rfa8 18.Nd4 Qa6 19.Nxc6 bxc6 20.Bd4 Rxa3 21.Rxa3 Qxa3 22.Qa1 h6 23.Qxa3 Rxa3 24.Rd1 f4 25.f3 Bf5 26.Rd2 Bd3 27.Kf2 Kf8 28.g3 fxg3+ 29.hxg3 Ke7 30.Rb2 Bb5 31.Rd2 h5 32.Bb2 Rb3 33.Bd4 Ke6 34.Kg2 Kf5 35.e6 fxe6 36.Bxg7 e5 37.g4+ hxg4 38.fxg4+ Ke4 39.Rf2 Re3 40.g5 d4 41.g6 Re2 42.Bh6 Kd3 43.Bg7 Bc4 44.Bf6 Rxf2+ 45.Kxf2 e4 46.Ke1 e3 47.Be7 Ke4 0-1

Pierre et Vacances Open (February 13-19)

IM Leon Piasetski's score at the Pierre et Vacances Open hovered around the 50% mark for the whole event and that's what he finished with, 4.5/9. The winner of the sixty-one player tournament was Russian GM Evgeny Romanov on 7.0/9, a half point ahead of Etienne Bacrot and four others. [Crosstable](#)

Thompson Rivers University Chess Club (Kamloops)

From Sadriddin Mirkhodjaev: the Thompson Rivers University Chess Club in Kamloops meets on Thursdays (4-7 pm), and Saturdays (1-4 pm) at the House of Learning (HOL) building at TRU campus, room 161. Our primary email is trusuchessclub@gmail.com, and we also have a facebook group "TRUSU Chess Club", where all relevant information about the club could be found. My cellphone number is 250 682-4305.

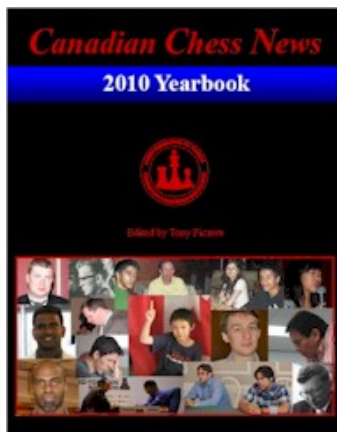
Nakamura coming to the Canadian Open

GM Hikaru Nakamura is scheduled for a Lecture/Simul on Thursday July 12th from 1:00pm-4:00pm. Registration for this exciting event will begin Saturday July 7th at the Welcome BBQ (Fisherman's Wharf Park). Registration will also be available at the Canadian Open Registration desk until the event sells out. The event will start off with a short lecture titled "Life at the Top". GM Nakamura will then play chess simultaneously against thirty players. Anyone that wins against GM Nakamura will have bragging rights forever. Don't miss this event.

From [Wikipedia](#):

Hikaru Nakamura (born December 9, 1987 in Hirakata, Osaka, Japan) is an American chess Grandmaster (GM). He has been ranked among the top six players in the world by FIDE. Nakamura's first supertournament victory came at Wijk aan Zee 2011, finishing clear first ahead of the four top-rated players in the world in a performance described by former World Champion Garry Kasparov as better than any tournament by Bobby Fischer, and the best by an American in more than 100 years. Nakamura was rated No. 1 in the United States according to the November 2011 FIDE ratings list, at 2758. He tied for No. 1 with Kamsky on the October 2011 USCF ratings list at 2740. <http://hikarunakamura.com>

2010 Canadian Chess News Yearbook



Features all articles from Canadian Chess News in 2010! Includes Chess Globe, Across Canada and top rating lists for each month. Dozens of photos and articles highlighting the year in Canadian chess. Contributors include: IM Lawrence Day, IM Deen Hergott, NM Kevin Pacey, IM Edward Porper, IM Eric Hansen, GM Victor Mikhalevski ... and many more! Annotated games by IMs and GMs from across Canada and around the world: GM Eugenio Torre, GM Victor Mikhalevski, GM Josh Friedel, GM Jesse Kraai, GM Pascal Charbonneau, IM Lawrence Day, IM Edward Porper, IM Raja Panjwani ... just to name a few! 287 games (275 annotated!) with 807 diagrams! The most comprehensive source of Canadian chess news anywhere!

Electronic version also available in PDF format on CDROM at the CFC! Shop at the Chess Federation of Canada for all of your chess needs. Price: \$50, CFC Member: \$45 (add GST & shipping). Visit us online to order at www.chess.ca.

SIRALYI FEBRUARY OPEN (February 17-19) by Michael Yip

A whopping sixty-two players turned out when normal attendance is around forty-five to fifty.

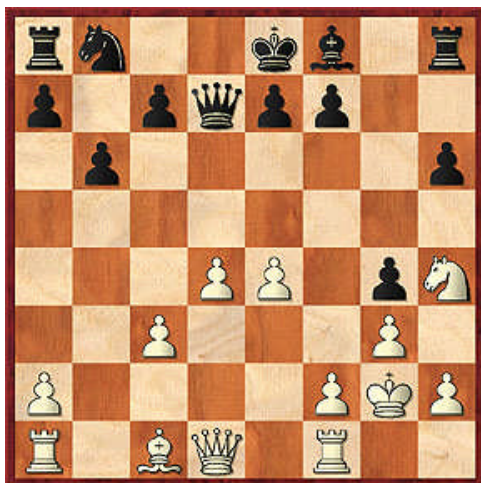
Maybe it's the season for chess here and the sign for a good year, I'm not sure. The top two players were 2100+ but overall the top end lacked the usual strength. The bottom end had around an unrated players. There was a bit of drama when the top three boards started a bit late as no one knew how to set the digital clocks.

My 6.0/7 was good for clear first as the round 7, board 1 game was a tense draw in a QRR-QRR middlegame while I won on board 2. The prize ceremony features little speeches and lots of prizes. I took home a bottle of wine, a T-Shirt, a medal, a 2011 Hungarian chess magazine and a bit of cash. All in all this tournament was a fun weekend and a great time.

Nadassy, Attila (2048) and Fodor, Peter (unrated) shared second with 5.5/7. A great result for Fodor who was not out of place on board one in the last round. Seven players followed with 5.0/7: Farkas, R; Bogad, P; Bartursek, A; Mihok, L; Bege, Aron; Szoke, G; and Bege, L. There were tons of upsets and hard fought games. Quite visible were an endless stream of promising young players to watch out for.

Yip, Michael - Bogad, Peter [A15] Siralyi Open February (7), 19.02.2012

This win earned me clear first place. My opponent played 1.g4 with White and defended with ...h6/...g5 lines as Black for the tournament. **1.Nf3 b6 2.g3 Bb7 3.Bg2 Nf6 4.c4 h6** Already a novelty but I don't find this idea very logical. **5.Nc3 g5 6.0-0 g4 7.Nh4** A modest move that holds up Black's intended h-file attack. 7.Ne5 is also strong. 7...Bxg2 8.Kxg2 Bg7 9.d4+/- **7...Bxg2 8.Kxg2 d5?** Opening up the position favors White. The intended light square action is easily prevented. 8...c5+/- **9.cxd5 Nxd5 10.e4!** Sticking to clear positional paths. White blocks the a8-h1 diagonal and intends to claim the centre. 10.Qa4+ It's hard to explain how I missed this simple win of a pawn. 10...c6 11.Qxg4± **10...Nxc3 11.bxc3** Now g4 is under attack giving White time to set up the pawn centre. **11...Qd7 11...h5 12.d4 e6+/- 12.d4±**



White has a nice centre, a safe king and a small lead in development. **12...h5 13.f4+/-** Houdini2.0 does not like this but the logic of a massive centre is self-evident. Any one or more of the pawns can be pushed further to restrict or attack Black. **13...Bg7 14.Qd3** White may want to play e5 to restrict Bg7 but does not want ...Qc6+ to win the c-pawn. **14...c5±** Striking at the centre but now the advantage is quite clear as White mounts nice piece pressure from now on. **15.Nf5 0-0** Castling into the attack. **16.Nxg7** Stripping the king to prepare the attack. **16...Kxg7 17.f5** Opening the path to the kingside. Now the wisdom of advancing the kingside pawns is shown to be flawed. **17...Nc6?±** Continuing to develop but ignoring White's

attacking possibilities. **18.Qe3!** The attack begins and White is already winning.. **18...Rh8 19.Qg5+** It looks like a one piece attack but White can quickly get reinforcements to the kingside. **19...Kf8**



20.f6! Striving to open up lines. **20...Rh7 21.d5 Na5 22.fxe7+ Qxe7 23.Qf5** Gaining a useful tempo so Bc1 can enter the game. **23...Rh8 24.Bg5 Qd7 25.Bh6+ Ke8 26.Qg7!+- 23...Kg8 24.Bg5** Bringing in the bishop with tempo. **24...Qf8 25.Bf6** Quite logical. Not Rh7 is sealed while White's forces can roam the board. From now to the end of the game White plays to restrict the activity of Rh7 as much as possible while pressing for the win. By playing this way, White limits the amount of counterplay and resistance that Black can offer as White will be playing RRB vs RN for all intensive purposes. **25.e5!+-** is the Houdini2.0 preference and is allegedly stronger. **25...Qh6 26.Rf4** Sealing Black's queen in on the kingside.

26...Nc4 27.Re1 Full mobilization is complete. Now White can start looking for the forced win. **27...Nd6 28.Qe5 Ne8 29.Bh4** The bishop dominates the knight, keeps the h-file closed and keeps an eye on d8 so White can push the d-pawn. **29...Qg7** Offering White a chance to bail into an ending. This offer is accepted as White has a winning position with the d-pawn ready to launch. **30.Qxg7+ Kxg7 31.e5** Not a hard move to find. All White has to do is keep Rh7 a prisoner on the kingside and then push the central pawns to restrict the knight. **31...Nc7 32.Bf6+** I like this move as it restricts the rook. **32...Kg6** Now White can continue dominating the centre as Black cannot really resist much without Rh7. **33.c4**



White is in no hurry as Rh7 remains locked out of Black. **33...Ne8 34.Bh4** The bishop should be kept to assist the d-pawn amongst other duties. **34...Nc7 35.Rf6+ Kg7 36.Ref1** Activating with tempo. **36...Kg8** Black's own king plays its role of restricting Rh7. **37.Rc6** This infiltration is strong. **37...Na6** Now Black is totally uncoordinated and White can win in any number of ways **37...Ne8 38.d6 Rh6 39.Rf5 Kf8 40.a4+-** Is also winning for White. **38.d6 Rf8 39.Bf6** Continuing with the restriction theme. **39...Rh6 40.d7** Nothing can stop the d-pawn now. The final position emphasizes the complete ineffectiveness of Black's army. **1-0**

BROWSING FOR ENDGAMES by Dan Scoones

The notion that two bishops are stronger than bishop and knight in the endgame can be traced back to Wilhelm Steinitz. In the second half of the 19th century the leading chess journalists used to engage each other in endless public debates, often resorting to personal attack when no other resources were available. Steinitz himself was not above deploying the weapon of insult – mostly when replying to his cadre of enemies – but he went a step further. He proved the correctness of his ideas by using them to win games. His claim of superiority for the bishop pair wasn't just talk. He backed up the claim with results.

In the modern era there is widespread understanding that a single advantage may not be enough to win a chess game. This is particularly true of the bishop pair. Even where the opponent is forced onto the defensive, he can often hold out with simple persistence as long as he does not allow the creation of a second target or the opening of a second front. In positions where the pawn structure is neat and tidy and the knight has a strong square or two, the advantage of the bishop pair can turn out to be purely theoretical. But when the defender's pawns are weak or isolated and his knight is floating around aimlessly, things are different. The bishops are a terrible force when they are hunting down pawns because moving out of range of one means coming into range of the other. Resistance, in the end, is futile.

The minor piece ending that arose in the game **Vranesic-Day, Canada (ch) 1972** illustrates these ideas. In the first diagram White has several advantages beside the bishop pair. Black's queenside pawns are split and isolated, and there is no really effective square for his knight. On the other side of the board White has a potential pawn roller and a more active king. The combined advantage is so great that Black will soon end up in a state of paralysis – or *zugzwang* as we say in the trade.



The bishop pair goes to work

37.Be4 Nc8

Pushing the c-pawn just makes things worse: 37...c4 38.Kf3 c3 39.Be3 Bf6 40.g4 and Black is in a bad way.

38.Kf3 Nd6 39.Bd5 Kf6

Black could also try 39...Nb5 40.g4 Bc3 41.Bc1 a5 42.g5 a4 43.f5 Nd4+ but White is winning after 44.Ke4 Ne2 45.f6+ Kf8 46.Bf4 Nxf4 47.Kxf4 Be1 48.Kg4.

40.g4 h6?

A word from Lawrence Day: "The last move in the session and a critical error which eases White's task of creating connected passed pawns. After 40...Nb5 the win would be much more difficult." (*Chess Canada*, Jul/Aug 1972).

Normally the defender should not push pawns without a concrete reason, but here it does not seem to matter. White's pawns go forward with or without the move ...h6.

41.h3 Nb5 42.f5 Nc3 43.Be6 Kg7 44.h4 a5 45.g5+- hxg5 46.hxg5 a4 47.Bc4

Also possible was 47.f6+ Bxf6 48.gxf6+ Kxf6 expand 49.Bc4 Nb1 50.Bc1 a3 51.Ke3 Nc3 52.Bxa3 Na4 53.Ke4 (if 53.Bb5 then 53...Nb6) 53...Nb6 54.Ba2 Nd7 55.Bb3 Ke7 56.Kd5 Kd8 57.Kd6 and wins.

47...Nb1

No better was 47...Nd1 48.f6+ Bxf6 49.gxf6+ Kxf6 50.Ke2 Nb2 51.Bc3+, etc.

48.Bc1 a3 49.Kg4 Be5 50.Kh5 Bd4 51.Be3! Be5

Black cannot take the bishop: 51...Bxe3 52.f6+ Kf8 53.g6 and White wins by promoting his g-pawn.

52.Bxc5 Nd2 53.Bd5 Bb2 54.Be7 Ne4



The end is in sight

55.Be6

This definitely wins, but 55.Bxe4! was more elegant; for example, 55...a2 56.f6+ Kh8 57.f7 Bg7 58.Bf6 a1Q 59.f8Q mate.

55...Ng3+ 56.Kg4 Ne4 57.Kf4 Nf2 58.f6+ Kg6 59.Bf5+ Kh5 60.f7 Bg7 61.Bxa3 Nh3+ 62.Bxh3 1-0

A well-played ending by Dr. Vranesic.

BCBASE UPDATE

This is a database of games either played in British Columbia or by B.C. players elsewhere in the world. These have been assembled from various sources by your editor: other databases, published sources (magazines, newspaper columns, books), and scoresheets, both recent (the latest Keres tournaments and B.C. Championships) and historical (with special thanks to Max Enke/the B.C. Archives, Miervaldis Jursevskis, Jonathan Berry, the family of Lionel Joyner, Philip C. Cavanagh, Brian Potter, David Hladek, Fred Schulz, John Baines-Lewis, Ed Seedhouse, and Lynn Stringer).

Generally games by players while they were resident in B.C. are included; thus the games for Dave Ross and Gordon Taylor only cover the period when they actually lived here. Some exceptions are made for a few stronger players when the additional games give a fuller perspective on their playing careers. For example, included are games by Elod Macskasy and Miervaldis Jursevskis before they came to Canada, Lionel Joyner before he came to B.C., and Peter Biyiasas after he left the country.

The latest versions of BCBASE (currently 20,084 games): <http://chess.bc.ca/games.shtml> These files are current to February 1, 2012 and include and supercede all previous versions, including the Supplements.

This collection is not definitive, but is very much a work in progress - there are still published games that have yet to be entered. Supplements of new games will be provided on a regular basis (in conjunction with the games in the Bulletin), and the database itself will be periodically updated. If readers notice errors, or would like to contribute their own games to the collection, please contact Stephen Wright (swright2@telus.net).

Silverdale Beach Hotel Classic

March 10-11, Silverdale, WA

http://www.nwchess.com/calendar/Silverdale_Beach_201203.pdf

March Active (actually blitz)

Date: Sunday, March 18

Location: Vancouver Bridge Centre, 2776 East Broadway (at Kaslo), Vancouver

Rounds: 7

Round Times: RD1: Noon Rd2: 1:00 Lunch Rd3: 1:45 Lunch Rd4/5/6/7: 3:15/4:00/4:45/5:30

Type: Regular Swiss.

Time Controls: G/10 + 5 sec. increments or G/12

Entry Fee: \$15

Prizes: 1st \$100 2nd \$80 BU1900 \$60 BU1600 \$60 based on 30 entries. The Vancouver Active rating will be used

Registration: On site at 11:30am or contact Luc Poitras at (778) 846-0496

Email: lucque@shaw.ca

Bring your chess set and clock if you have one. No membership required

UPCOMING EVENTS

Junior

<http://www.bcjuniorchess.com/calendar/>

<http://victoriajuniorchess.pbworks.com/Tournament-Schedule>

UBC Thursday Night Swiss

Thursdays, 6:30 pm, Irving K. Barber Learning Centre room 158, 1961 East Mall, University of British Columbia entry fee \$21 adult, \$16 junior Contact Aaron Cosenza, xramis1@yahoo.ca

For details of the following see www.chess.bc.ca

Silverdale Beach Hotel Classic

March 10-11, Silverdale, WA

http://www.nwchess.com/calendar/Silverdale_Beach_201203.pdf

March Active

March 18, Vancouver Bridge Centre

April Active

April 1, Vancouver Brige Centre

Grand Pacific Open

April 6-9, Victoria

Paul Keres Memorial

May 19-21, Richmond

Canadian Open

July 8-13, Victoria

U.S. Open

August 4-12, Vancouver WA